

JESUS/JUDAS : The Last Supper  
mm. 87-113 and mm. 132-155

85

Jesus

Pet - er will de - ny me

Gm Eb F Gm Cm F7

Jesus Christ Superstar

88

in just a few hours three times will de - ny me and that's not all I see

Bb Eb Ebmaj7 Ab Db Dbmaj7 Cm Eb Bb

91

One of you here din - ing, one of my twelve cho - sen, Will leave to be - tray me

Cm Cm Eb Bb

94

**Jesus**

Why don't you go do it?

**Judas**

Cut out the dra - ma - tics you know ve - ry well who You want me to do it!

Cm Eb Bb

Jesus Christ Superstar

98

Hur-ry they are wait-ing I don't care why you do it!

If you knew why I do it To think I ad-mired you

Cm Eb Bb

102

You li-ar you Ju-das

For now I des-pise you You want me to do it!

*shouting*

Cm Eb Bb

*ad lib. [extempore] with discretion*

105

(Judas)

what if I just stayed here and ru-ined your am-bi-tion? Christ you de-serve it?

Cm Eb Bb

*ff*

108 **Jesus** *Parlando*

Hur-ry you fool hur-ry and go, save me your speech-es I don't want to

*mf* C Fm Bb C

*sim.*

112

know go!

C Fm Bb C

**H** *Subito (little quicker with 8 beat feel)*  
Judas

132

*f* You sad pa - thet-ic man see where you've brought us to Our

*f* F#m D *free style [8 beat]*

134

i - deals die - a-round us all be-cause of you and now the

*sim. or ad lib.* Bm C#7

Jesus Christ Superstar

136



sad-dest cut of all      Some-one has to turn you in      like a com-mon cri-min-al,      like a

A grand staff with treble and bass clefs. The right hand plays chords and the left hand plays a rhythmic accompaniment. Chord symbols F#m, D, and Bm are placed above the right-hand staff. Measure 136 has F#m, 137 has D, and 138 has Bm.

139



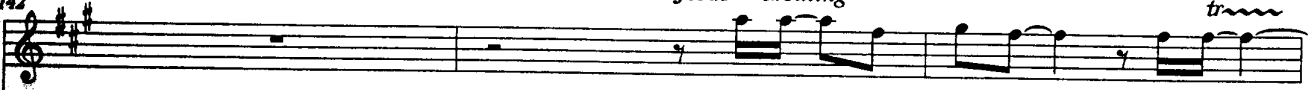
wound-ed an-i-mal      A jad-ed man-dar-in      A jad-ed man-dar-in      As a

A grand staff with treble and bass clefs. Chord symbols C#7, F#m, and D are placed above the right-hand staff. Measure 139 has C#7, 140 has F#m, and 141 has D.

142

Jesus shouting

*tr*



Get out!      They're wait-ing      Get out!



jad-ed, jad-ed, fad-ed, jad-ed,      jad-ed man-da-rin

A grand staff with treble and bass clefs. Chord symbols Bm, C#7, F#m, and F#m are placed above the right-hand staff. Measure 142 has Bm, 143 has C#7 and F#m, and 144 has F#m.

Jesus Christ Superstar

145 (sob)

they're wait - ing oh oh oh they're wait - ing for you oh!

D Bm C#7

148 **I** *Slower* Judas

Ev' - ry time I look at you I don't un - der - stand Why you let the things you did get

*ff* *sim.* F# A B

151

so out of hand You'd have man - aged bet - ter if you'd had it planned

F# F# A

154

oh

B F#